

**Attic Breeze®**  
America's Leader in Solar Powered Ventilation

# GEN3

Unleash The Power

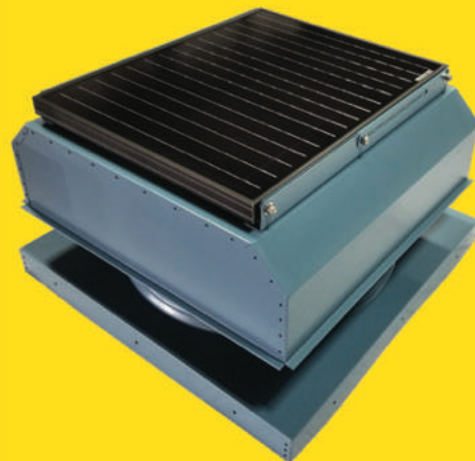
**MORE POWER  
MORE PERFORMANCE  
MORE COVERAGE**



**MORE POWER. MORE PERFORMANCE. MORE COVERAGE.**



LIFETIME  
**WARRANTY**  
RESIDENTIAL

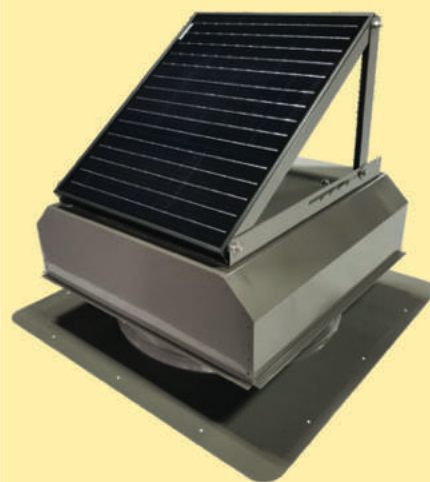


**GEN3**  
Unleash The Power

**CONTRACTOR  
INSTALLATION KIT  
INCLUDED**

***Attic Breeze®***

**14  
AVAILABLE  
COLORS &  
30+  
MODEL OPTIONS**





# GEN3 SFA MODEL SERIES

Unleash The Power

The SFA model series is the perfect choice for use on southern, western and eastern facing roofs.

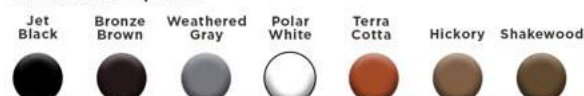
- ✱ Integrated, adjustable bracket included
- ✱ Zincalume alloy construction, no plastic
- ✱ Available in 25, 35 & 45 watt models
- ✱ Custom, high efficiency, commercial grade, monocrystalline solar panel with impact resistant tempered glass
- ✱ AAMA 2604 Compliant, Series 38 Super Durable, ISO 2360 powder coated finish
- ✱ Tog-L-Loc® metal fastening throughout
- ✱ Corrosion resistant
- ✱ For use on roofs with composite shingles, cedar shake, flat concrete tiles or other low profile roofing materials



- ✱ **LIFETIME Residential Warranty, the leader in the industry**
- ✱ Thermal control, fire safety switch and contractor installation kit included
- ✱ Stainless steel hardware throughout
- ✱ 14" aluminum fan blade dynamically balanced, the largest in the industry
- ✱ Stainless steel wildlife guard
- ✱ Proprietary UltraFlō® vent housing design technology for maximum CFM performance
- ✱ Whisper quiet operation
- ✱ Pre-drilled mounting holes
- ✱ FBC & TDI Windstorm Certified

## Model Shown AB-3523A Jet Black

### Stock Color Options



### Custom Color Options



Model	AB-2523A	AB-3523A	AB-4523A
maximum airflow	1500 CFM	1775 CFM	1925 CFM
attic coverage	up to 2500 sqft*	up to 2850 sqft*	up to 3100 sqft*
solar panel	25 watt	35 watt	45 watt
solar panel type	monocrystalline	monocrystalline	monocrystalline
adjustable panel	yes	yes	yes
thermal control & fire safety switch	included	included	included
corrosion resistance	powder coated	powder coated	powder coated
finish	AAMA 2604 Compliant	AAMA 2604 Compliant	AAMA 2604 Compliant
fan housing	zincalume alloy	zincalume alloy	zincalume alloy
fan housing style	venturi	venturi	venturi
fan blade	14" aluminum	14" aluminum	14" aluminum
hardware	stainless steel	stainless steel	stainless steel
wildlife guard	stainless steel	stainless steel	stainless steel
noise level	<30 dB (1 sone)	<30 dB (1 sone)	<30 dB (1 sone)
roof flashing	self-flashing	self-flashing	self-flashing

\*Proper sizing of our attic fans depends on a variety of factors including roof pitch, attic size, architecture, roof color, as well as the specific ventilation application. Please visit our Design Studio at [www.atticbreeze.net](http://www.atticbreeze.net) for more information, contact your nearest distributor or Attic Breeze at 877-288-4234.  
 †Tog-L-Loc® is a federally registered trademark owned by BTM Corporation

WWW.ATTICBREEZE.NET **Attic Breeze** WWW.ATTICBREEZE.NET

# GEN3 SFD MODEL SERIES

Unleash The Power

Designed for northern facing roofs or shaded areas where a remote mounted solar panel may be required for better sun exposure, our SFD model series allows the fan unit to be installed where you want, while offering the flexibility of mounting the solar panel in a different location. The SFD model series comes standard with 15 feet of weatherproof power cable and low profile mounting brackets for your remote solar panel, as well as offering options for extended cable runs and a universal solar panel mounting bracket.

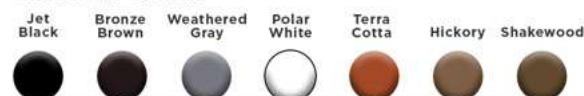
- \* Remote mounted solar panel
- \* Zincalume alloy construction, no plastic
- \* Available in 25, 35, 45 & 65 watt models
- \* Custom, high efficiency, commercial grade, monocrystalline solar panel with impact resistant tempered glass
- \* AAMA 2604 Compliant, Series 38 Super Durable, ISO 2360 powder coated finish
- \* Tog-L-Loc® metal fastening throughout
- \* Corrosion resistant
- \* For use on roofs with composite shingles, cedar shake, flat concrete tiles or other low profile roofing materials
- \* Standard fixed bracket system included



- \* **LIFETIME Residential Warranty, the leader in the industry**
- \* Thermal control, fire safety switch and contractor installation kit included
- \* Stainless steel hardware throughout
- \* 14" aluminum fan blade dynamically balanced, the largest in the industry
- \* Stainless steel wildlife guard
- \* Proprietary UltraFlō® vent housing design technology for maximum CFM performance
- \* Whisper quiet operation
- \* Pre-drilled mounting holes
- \* FBC & TDI Windstorm Certified

## Model Shown AB-3523D Jet Black

### Stock Color Options



### Custom Color Options



Model	AB-2523D	AB-3523D	AB-4523D	AB-6523D
maximum airflow	1500 CFM	1775 CFM	1925 CFM	2150 CFM
attic coverage	up to 2500 sqft*	up to 2850 sqft*	up to 3100 sqft*	up to 3450 sqft*
solar panel	25 watt	35 watt	45 watt	65 watt
solar panel type	monocrystalline	monocrystalline	monocrystalline	monocrystalline
adjustable panel	optional	optional	optional	optional
power cord	25 feet; 18 AWG	25 feet; 18 AWG	25 feet; 18 AWG	25 feet; 18 AWG
thermal control & fire safety switch	included	included	included	included
corrosion resistance	powder coated	powder coated	powder coated	powder coated
finish	AAMA 2604 Compliant	AAMA 2604 Compliant	AAMA 2604 Compliant	AAMA 2604 Compliant
fan housing	zincalume alloy	zincalume alloy	zincalume alloy	zincalume alloy
fan housing style	venturi	venturi	venturi	venturi
fan blade	14" aluminum	14" aluminum	14" aluminum	14" aluminum
hardware	stainless steel	stainless steel	stainless steel	stainless steel
wildlife guard	stainless steel	stainless steel	stainless steel	stainless steel
noise level	<30 dB (1 sone)	<30 dB (1 sone)	<30 dB (1 sone)	<30 dB (1 sone)
roof flashing	self-flashing	self-flashing	self-flashing	self-flashing

\*Proper sizing of our attic fans depends on a variety of factors including roof pitch, attic size, architecture, roof color, as well as the specific ventilation application. Please visit our Design Studio at [www.atticbreeze.net](http://www.atticbreeze.net) for more information, contact your nearest distributor or Attic Breeze at 877-288-4234.  
 † Tog-L-Loc® is a federally registered trademark owned by BTM Corporation

WWW.ATTICBREEZE.NET **Attic Breeze** WWW.ATTICBREEZE.NET



# GEN3 CMA MODEL SERIES

Unleash The Power

The CMA model series is the perfect choice for use on southern, western and eastern facing roofs.

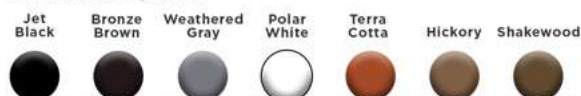
- ✱ Integrated, adjustable bracket included
- ✱ Zincalume alloy construction, no plastic
- ✱ Available in 25, 35 & 45 watt models
- ✱ Custom, high efficiency, commercial grade, monocrystalline solar panel with impact resistant tempered glass
- ✱ AAMA 2604 Compliant, Series 38 Super Durable, ISO 2360 powder coated finish
- ✱ Tog-L-Loc®† metal fastening throughout
- ✱ Corrosion resistant
- ✱ For use on high profile tile, metal roofs, flat roofs or other high profile roofing materials



- ✱ **LIFETIME Residential Warranty, the leader in the industry**
- ✱ Thermal control, fire safety switch and contractor installation kit included
- ✱ Stainless steel hardware throughout
- ✱ 14" aluminum fan blade dynamically balanced, the largest in the industry
- ✱ Stainless steel wildlife guard
- ✱ Available with roof curb installation kit
- ✱ Proprietary UltraFlō® vent housing design technology for maximum CFM performance
- ✱ Whisper quiet operation
- ✱ Pre-drilled mounting holes
- ✱ FBC & TDI Windstorm Certified

## Model Shown AB-4543A Bronze Brown

### Stock Color Options



### Custom Color Options



Model	AB-2543A	AB-3543A	AB-4543A
maximum airflow	1500 CFM	1775 CFM	1925 CFM
attic coverage	up to 2500 sqft*	up to 2850 sqft*	up to 3100 sqft*
solar panel	25 watt	35 watt	45 watt
solar panel type	monocrystalline	monocrystalline	monocrystalline
adjustable panel	yes	yes	yes
thermal control & fire safety switch	included	included	included
corrosion resistance	powder coated	powder coated	powder coated
finish	AAMA 2604 Compliant	AAMA 2604 Compliant	AAMA 2604 Compliant
fan housing	zincalume alloy	zincalume alloy	zincalume alloy
fan housing style	venturi	venturi	venturi
fan blade	14" aluminum	14" aluminum	14" aluminum
hardware	stainless steel	stainless steel	stainless steel
wildlife guard	stainless steel	stainless steel	stainless steel
noise level	<30 dB (1 sone)	<30 dB (1 sone)	<30 dB (1 sone)
roof flashing	curb mount	curb mount	curb mount

\*Proper sizing of our attic fans depends on a variety of factors including roof pitch, attic size, architecture, roof color, as well as the specific ventilation application. Please visit our Design Studio at [www.atticbreeze.net](http://www.atticbreeze.net) for more information, contact your nearest distributor or Attic Breeze at 877-288-4234.  
†Tog-L-Loc® is a federally registered trademark owned by BTM Corporation

WWW.ATTICBREEZE.NET **Attic Breeze** WWW.ATTICBREEZE.NET

# GEN3 CMD MODEL SERIES

Unleash The Power

Designed for northern facing roofs or shaded areas where a remote mounted solar panel may be required for better sun exposure, our CMD model series allows the fan unit to be installed where you want, while offering the flexibility of mounting the solar panel in a different location. The CMD model series comes standard with 15 feet of weatherproof power cable and low profile mounting brackets for your remote solar panel, as well as offering options for extended cable runs and a universal solar panel mounting bracket.

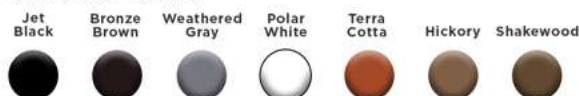
- \* Remote mounted solar panel
- \* Zincalume alloy construction, no plastic
- \* Available in 25, 35, 45 & 65 watt models
- \* Custom, high efficiency, commercial grade, monocrystalline solar panel with impact resistant tempered glass
- \* AAMA 2604 Compliant, Series 38 Super Durable, ISO 2360 powder coated finish
- \* Tog-L-Loc® metal fastening throughout
- \* Corrosion resistant
- \* For use on high profile tile, metal roofs, flat roofs or other high profile roofing materials
- \* Standard fixed bracket system included
- \* Pre-drilled mounting holes



- \* **LIFETIME Residential Warranty, the leader in the industry**
- \* Thermal control, fire safety switch and contractor installation kit included
- \* Stainless steel hardware throughout
- \* 14" aluminum fan blade dynamically balanced, the largest in the industry
- \* Stainless steel wildlife guard
- \* Proprietary UltraFlō® vent housing design technology for maximum CFM performance
- \* Whisper quiet operation
- \* FBC & TDI Windstorm Certified
- \* Available with roof curb installation kit

## Model Shown AB-2534D Weathered Gray

### Stock Color Options



### Custom Color Options



Model	AB-2543D	AB-3543D	AB-4543D	AB-6543D
maximum airflow	1500 CFM	1775 CFM	1925CFM	2150 CFM
attic coverage	up to 2500 sqft*	up to 2850 sqft*	up to 3100 sqft*	up to 3450 sqft*
solar panel	25 watt	35 watt	45 watt	65 watt
solar panel type	monocrystalline	monocrystalline	monocrystalline	monocrystalline
adjustable panel	optional	optional	optional	optional
power cord	25 feet; 18 AWG	25 feet; 18 AWG	25 feet; 18 AWG	25 feet; 18 AWG
thermal control & fire safety switch	included	included	included	included
corrosion resistance	powder coated	powder coated	powder coated	powder coated
finish	AAMA 2604 Compliant	AAMA 2604 Compliant	AAMA 2604 Compliant	AAMA 2604 Compliant
fan housing	zincalume alloy	zincalume alloy	zincalume alloy	zincalume alloy
fan housing style	venturi	venturi	venturi	venturi
fan blade	14" aluminum	14" aluminum	14" aluminum	14" aluminum
hardware	stainless steel	stainless steel	stainless steel	stainless steel
wildlife guard	stainless steel	stainless steel	stainless steel	stainless steel
noise level	<30 dB (1 sone)	<30 dB (1 sone)	<30 dB (1 sone)	<30 dB (1 sone)
roof flashing	curb mount	curb mount	curb mount	curb mount

\*Proper sizing of our attic fans depends on a variety of factors including roof pitch, attic size, architecture, roof color, as well as the specific ventilation application. Please visit our Design Studio at [www.atticbreeze.net](http://www.atticbreeze.net) for more information, contact your nearest distributor or Attic Breeze at 877-288-4234.  
 †Tog-L-Loc® is a federally registered trademark owned by BTM Corporation

[WWW.ATTICBREEZE.NET](http://WWW.ATTICBREEZE.NET) **Attic Breeze** [WWW.ATTICBREEZE.NET](http://WWW.ATTICBREEZE.NET)



# GEN3 GM MODEL SERIES

Unleash The Power

Our GM model solar attic fans are ideal for virtually any roof type featuring gable-end architecture or retrofit applications. Offering easy installation behind or underneath any properly sized passive vent, the GM model series is a great alternative for customers who want the benefits of solar powered ventilation without the need for making a roof penetration. And since no roof penetration is required, the GM model series fans can be used in any hurricane zone area without the need for permitting.

- ✿ Remote mounted solar panel
- ✿ Zincolume alloy construction, no plastic
- ✿ Available in 25, 35, 45 & 65 watt models
- ✿ Custom, high efficiency, commercial grade, monocrystalline solar panel with impact resistant tempered glass
- ✿ Tog-L-Loc® metal fastening throughout
- ✿ Offers easy installation behind or underneath any properly sized passive vent



**Model Shown  
AB-4553**

- ✿ **LIFETIME Residential Warranty, the leader in the industry**
- ✿ Thermal control, fire safety switch and contractor installation kit included
- ✿ 14" aluminum fan blade dynamically balanced, the largest in the industry
- ✿ Whisper quiet operation
- ✿ Standard fixed bracket system included
- ✿ Pre-drilled mounting holes
- ✿ Corrosion resistant

Model	AB-2553	AB-3553	AB-4553	AB-6553
maximum airflow	1400 CFM	1700 CFM	1875 CFM	2100 CFM
attic coverage	up to 2125 sqft*	up to 2425 sqft*	up to 2635 sqft*	up to 2935 sqft*
solar panel	25 watt	35 watt	45 watt	65 watt
solar panel type	monocrystalline	monocrystalline	monocrystalline	monocrystalline
adjustable panel	optional	optional	optional	optional
power cord	25 feet; 18 AWG	25 feet; 18 AWG	25 feet; 18 AWG	25 feet; 18 AWG
thermal control & fire safety switch	included	included	included	included
corrosion resistance	zincolume only	zincolume only	zincolume only	zincolume only
finish	mill finish only	mill finish only	mill finish only	mill finish only
fan housing	zincolume alloy	zincolume alloy	zincolume alloy	zincolume alloy
fan housing style	cylinder	cylinder	cylinder	cylinder
fan blade	14" aluminum	14" aluminum	14" aluminum	14" aluminum
hardware	stainless steel	stainless steel	stainless steel	stainless steel
wildlife guard	none	none	none	none
noise level	<30 dB (1 sone)	<30 dB (1 sone)	<30 dB (1 sone)	<30 dB (1 sone)
roof flashing	retrofit/gable	retrofit/gable	retrofit/gable	retrofit/gable

\*Proper sizing of our attic fans depends on a variety of factors including roof pitch, attic size, architecture, roof color, as well as the specific ventilation application. Please visit our Design Studio at [www.atticbreeze.net](http://www.atticbreeze.net) for more information, contact your nearest distributor or Attic Breeze at 877-288-4234.  
 †Tog-L-Loc® is a federally registered trademark owned by BTM Corporation

**WWW.ATTICBREEZE.NET Attic Breeze WWW.ATTICBREEZE.NET**

# GEN3 WM MODEL SERIES

Unleash The Power

The WM model series solar attic fan offers a complete ventilation solution, combining both solar fan and louvered vent into one product. Designed for easy wall mount installation, these fans are great for either residential or commercial ventilation projects. And just like the GM model series fans, our wall mounted fans can be used in any hurricane zone area without the need for permitting since no roof penetration is required.

- \* Remote mounted solar panel
- \* Zincalume alloy construction, no plastic
- \* Available in 25, 35, 45 & 65 watt models
- \* Custom, high efficiency, commercial grade, monocrystalline solar panel with impact resistant tempered glass
- \* AAMA 2604 Compliant, Series 38 Super Durable, ISO 2360 powder coated finish
- \* Tog-L-Loc® metal fastening throughout
- \* Corrosion resistant



- \* **LIFETIME Residential Warranty, the leader in the industry**
- \* Thermal control, fire safety switch and contractor installation kit included
- \* Stainless steel hardware throughout
- \* 14" aluminum fan blade dynamically balanced, the largest in the industry
- \* Whisper quiet operation
- \* Designed for easy wall mount installation
- \* Standard fixed bracket system included

#### Stock Color Options



### Model Shown AB-4563 Bronze Brown

Model	AB-2563	AB-3563	AB-4563	AB-6563
maximum airflow	1400 CFM	1700 CFM	1875 CFM	2100 CFM
attic coverage	up to 2125 sqft*	up to 2425 sqft*	up to 2635 sqft*	up to 2935 sqft*
solar panel	25 watt	35 watt	45 watt	65 watt
solar panel type	monocrystalline	monocrystalline	monocrystalline	monocrystalline
adjustable panel	optional	optional	optional	optional
power cord	25 feet; 18 AWG	25 feet; 18 AWG	25 feet; 18 AWG	25 feet; 18 AWG
thermal control & fire safety switch	included	included	included	included
corrosion resistance	powder coated	powder coated	powder coated	powder coated
finish	AAMA 2604 Compliant	AAMA 2604 Compliant	AAMA 2604 Compliant	AAMA 2604 Compliant
fan housing	zincalume alloy	zincalume alloy	zincalume alloy	zincalume alloy
fan housing style	cylinder	cylinder	cylinder	cylinder
fan blade	14" aluminum	14" aluminum	14" aluminum	14" aluminum
hardware	stainless steel	stainless steel	stainless steel	stainless steel
wildlife guard	none	none	none	none
noise level	<30 dB (1 sone)	<30 dB (1 sone)	<30 dB (1 sone)	<30 dB (1 sone)
roof flashing	louvered wall mount	louvered wall mount	louvered wall mount	louvered wall mount

\*Proper sizing of our attic fans depends on a variety of factors including roof pitch, attic size, architecture, roof color, as well as the specific ventilation application. Please visit our Design Studio at [www.atticbreeze.net](http://www.atticbreeze.net) for more information, contact your nearest distributor or Attic Breeze at 877-288-4234.  
 †Tog-L-Loc® is a federally registered trademark owned by BTM Corporation

[WWW.ATTICBREEZE.NET](http://WWW.ATTICBREEZE.NET) **Attic Breeze** [WWW.ATTICBREEZE.NET](http://WWW.ATTICBREEZE.NET)



# PRODUCT ACCESSORIES

## REMOTE SOLAR PANEL MOUNTING BRACKETS

Attic Breeze solar powered ventilation products featuring a remote mounted solar panel are offered standard with our fixed, low-profile mounting bracket system. Conforming to both the slope and orientation of the roof line where the remote solar panel is installed, the Standard Mounting Bracket is the most appropriate for southern facing roofs with full sun exposure throughout the day.

Designed for northern roof orientations or similar installations where better sun exposure is needed, our Universal Mounting Bracket allows for full range adjustment of your remote mounted solar panel. The Universal Mounting Bracket may be installed on a roof, fascia, eve, wall or may even be pole mounted, offering a high degree of installation flexibility for achieving optimum sun exposure.

### PRODUCT FEATURES

- ✿ Weather resistant aluminum bracket construction with stainless steel hardware
- ✿ Florida and Texas windstorm approved
- ✿ Available with Attic Breeze products featuring a remote mounted solar panel (SFD, CMD, GM, WM model series)



Standard Mounting Bracket  
installed on shingled roof



Universal Mounting Bracket  
installed on shingled roof

## THERMAL SWITCH AND FIRE SAFETY SWITCH

Both the thermal switch and fire safety switch are included with all product models at no additional charge. The mechanical, bimetallic thermal switch activates when the attic temperatures are above a range of roughly 75°F (+/- 5°F) allowing operation of the fan when sunlight is available. When ambient attic temperatures are below the activation range, the fan will not operate. The fire safety switch is a thermal fuse device that will stop the operation of the fan when temperatures above 228°F are detected in the attic.

## POWER CABLES

Attic Breeze solar powered ventilation products featuring a remote mounted solar panel are offered with our 25 foot Standard Remote Power Cable. Manufactured with 18 AWG UV/weather resistant power cable and plug connectors, the Standard Remote Power Cable offers easy installation for most project applications.

### PRODUCT FEATURES

- ✿ UV/weather resistant power cable and plug connectors
- ✿ Available with Attic Breeze products featuring a remote mounted solar panel (SFD, CMD, GM, WM model series)



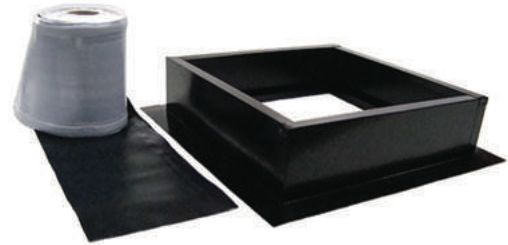
25 FOOT REMOTE POWER CABLE

# ROOF CURB KITS

Attic Breeze® roof curb installation kits provide a durable, easy to install roof curb base and flashing system for all of our curb mount (CMA/CMD) ventilation products. Designed for tile, metal, and flat roof applications, our roof curb kits will make your next curb mount installation a breeze!

## PRODUCT FEATURES

- ✿ 22GA zincalume alloy construction with heavy-duty powder coated black texture finish
- ✿ BreezeFlex™ self-adhesive, precut flexible flashing system for easy weatherproofing
- ✿ Self-tapping screws included
- ✿ 23-1/4" x 23-1/4" x 6" curb, with 2-1/4" base flashing
- ✿ Rated to support over 200lbs
- ✿ Offered as optional upgrade for all applicable models



AB-004 Roof Curb Installation Kit in black texture finish with matching BreezeFlex™ flashing

## BREEZEFLEX™ SPECIFICATIONS

- ✿ Lead FREE, environmentally friendly
- ✿ Can be easily cut and molded as needed to weatherproof virtually any type of roofing application
- ✿ UV and weather resistant EPDM rubber flashing
- ✿ Engineered with superior elongation properties for better stretching and molding
- ✿ Designed with an aluminum mesh backbone for superior strength and durability

**ENGINEERED FOR  
+300% STRETCHING  
& ELONGATION  
MOLDABILITY**

## BREEZEFLEX™ COLOR OPTIONS





# Breeze Mate®

## SOLAR VENTILATION SYSTEM

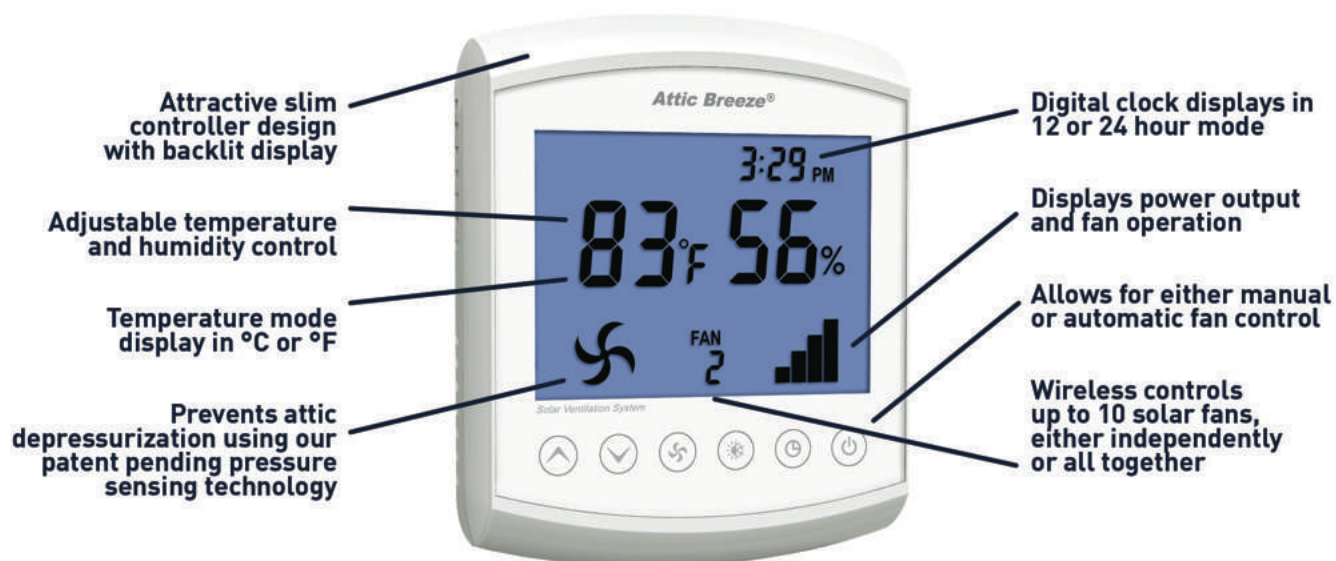
### Innovations in Ventilation Technology

The Breeze Mate® Solar Ventilation System combines our award winning UltraFlō® ventilation technology and proprietary control system design to give you the most intelligent solar powered ventilation solution ever created. Breeze Mate puts ventilation control in your hands, allowing full control over fan operation, as well as other safety and performance related features. Breeze Mate is easy to install and configure, using our wireless network technology to control solar fan operation. Whether used for residential or commercial applications, there is a Breeze Mate control solution for all your ventilation needs.

### How Does It Work?

The Breeze Mate® control system is designed in a master/slave configuration. The master controller (MC-10A Remote Interface Controller) is designed to operate up to ten (10) individual slave controllers (FC-10A Fan Controller), giving customers an attractive, easy to operate interface that offers full control over their Solar Ventilation System. The configuration allows for easy expansion, with installation of additional Attic Breeze solar attic fans requiring only the FC-10A Fan Controller to communicate on the Breeze Mate wireless network.

### PRODUCT FEATURES



MC-10A Remote Interface Controller



## FC-10A Fan Controller

## Breeze Mate® Gives You The Control

The Breeze Mate® Solar Ventilation System offers an unprecedented control solution for your ventilation applications. With the ability to independently adjust both temperature and humidity control ranges, Breeze Mate allows for customized ventilation control, specific to the needs of your application. Additionally, Breeze Mate wireless technology allows for control of up to ten (10) solar fans on the network, giving customers the option of installing multiple ventilation solutions for different applications. Designed for either individual or global control options, the versatility of the Breeze Mate Solar Ventilation System offers endless opportunities for optimizing ventilation performance.



Temperature Sensor Range	16°F - 176°F (-9°C - 80°C)
absolute accuracy	1.8°F (1.0°C)
resolution	0.4°F (0.2°C)
Temperature Control Range	32°F - 122°F (0°C - 50°C)
Pressure Sensor Range	30,000 Pa- 100,000 Pa
relative accuracy	20 Pa
resolution	1 Pa
Relative Humidity Sensor Range	1% - 99%
absolute accuracy	3%
resolution	0.1%
Relative Humidity Control Range	10% - 90%



# Breeze Mate®

## SOLAR VENTILATION SYSTEM



### BREEZE MATE® TWO YEAR PRODUCT WARRANTY

Your new Breeze Mate solar ventilation system is warranted by Attic Breeze to be free from defects in material and workmanship under normal use for two (2) years from the date of purchase. This warranty shall not cover damage caused by improper use, abuse, accidents, alterations to the product, nor does it cover damage resulting from the installation of the product or service performed on the product by persons other than Attic Breeze. This warranty is limited to the original purchaser only. Warranties must be registered through our online warranty registration system within 90 days of purchase. Please visit our website ([www.atticbreeze.net](http://www.atticbreeze.net)) for details. Thank you.



PEACE OF  
MIND AT  
YOUR  
FINGERTIPS





# ***Attic Breeze®***

**America's Leader in Solar Powered Ventilation**

## **LIFETIME WARRANTY**

With all metal zincalume alloy construction, commercial-grade monocrystalline solar panels, and UltraFlo® design technology, Attic Breeze manufactures the highest quality, most durable solar attic fans available. Unlike the "over-seas" made products you might find in a retail store, we never use plastic materials or discount parts because we believe in making a professional-grade product that is engineered to last a lifetime, even if that means it may cost a little more to make. Offering solar powered ventilation products that are both third-party tested and windstorm certified, we stand behind our quality workmanship with an industry leading lifetime warranty.

### **What does it COVER?**

**Motor:** motor brushes, bearings, and any manufacturer defects

**Solar Panel:** electrical issues, solar cells, and any manufacturer defects

**Thermal Switch:** any manufacturer defects

**Fan Blade:** any manufacturer defects

**Flashing and Hood:** welds, mechanical locks, and any manufacturer defects

Every part of your solar attic fan is covered for as long as you own it.

### **What is not COVERED?**

**Physical Damage:** (ex. dropping the fan off the roof during installation)

**Modifications:** (ex. rewiring the fan)

**Nature:** (ex. tree limbs falling on the fan, lightning strikes, etc...)

**Rodent Damage:** (ex. chewed wires or bent fan blades)

**Cosmetic Issues:** (ex. paint scratches, etc...)

Basically only those things that are not related to product quality.

## **TERMS & CONDITIONS**

We warrant our products to be free from defects in workmanship, parts, and materials for the lifetime of the product as applied to all residential applications and uses of our products. When used for multifamily, commercial, government, or military applications, our warranty is limited to 25 years from the original purchase date of the product. Attic Breeze specifically offers this warranty to the original registered owner of the product and warranty may not be transferred with ownership. Warranty coverage is inclusive of PARTS ONLY and Attic Breeze explicitly does not warrant any labor, shipping, or service fees incurred by purchaser for the replacement, repair, or exchange of any product or part(s) claimed under the terms and conditions of this warranty.

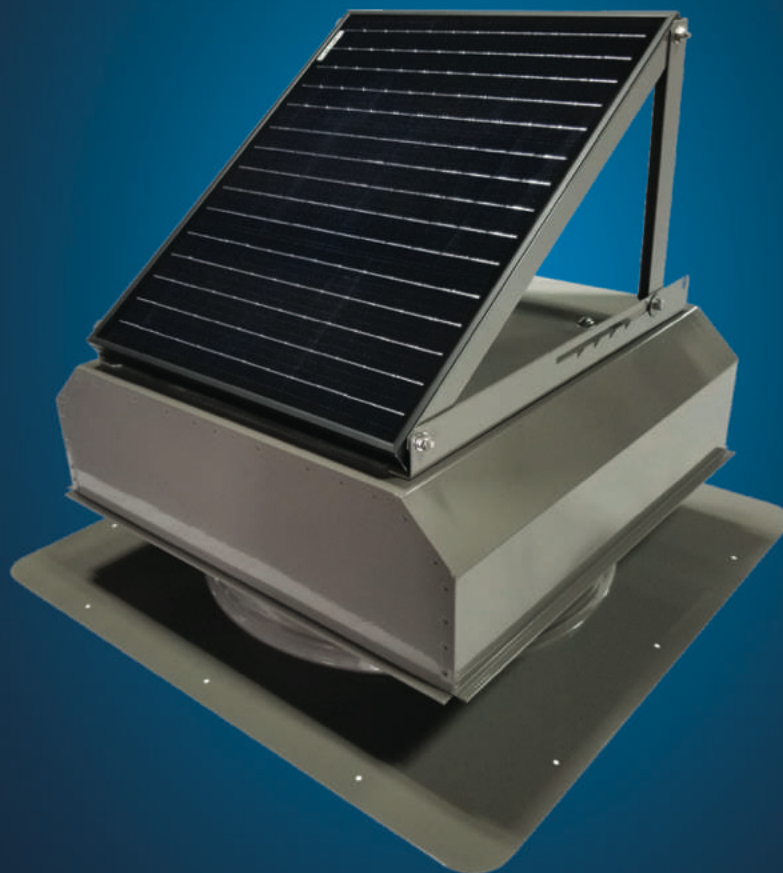
To review the specific terms and conditions of our warranty coverage, visit [www.atticbreeze.net](http://www.atticbreeze.net)  
Customer Care: 877-288-4234 or 254-865-9999 Customer Care Email: [support@atticbreeze.net](mailto:support@atticbreeze.net)

P.O. Box 1318, 1370 FM 116, Gatesville, Texas 76528

© 2021 Attic Breeze, LLC. All rights reserved.



***Attic Breeze***<sup>®</sup>  
America's Leader in Solar Powered Ventilation



# GEN3

Unleash The Power

**THE PERFORMANCE YOU NEED**

MORE  
POWER

MORE  
PERFORMANCE

MORE  
COVERAGE

A person is sitting on a porch, looking out at a sunset over a forest. The person is wearing blue jeans and a patterned shirt. A large, colorful geometric patterned pillow is in front of them. The porch has a white railing. The background is a dense forest of green trees. The sky is a mix of orange, yellow, and blue, indicating a sunset. The overall mood is peaceful and serene.

877-288-4234 / 254-865-9999 / [support@atticbreeze.net](mailto:support@atticbreeze.net)  
P.O. Box 1318 1370 FM 116 Gatesville, Texas 76528  
[www.atticbreeze.net](http://www.atticbreeze.net)

©2023 Copyright Attic Breeze, LLC. All rights reserved.